

# WALLSCAPING

WALL LUMINAIRES

# WALLSCAPING

## Wall luminaires

### HIGHLIGHT FOR WALL DESIGN

The term wallscaping is made up of the English words „wall“ and „(land)scaping“ for (landscape) design. The WALLSCAPING series by RZB is exactly that: the enhancement of outer walls through light. For this purpose, the four successful wall luminaires TECHNO, CYL, ZONO and NADELSPOT were redeveloped from scratch.

What all four product families have in common is a clear form language which supports their use in modern architecture. The housings have a two-part design and are extremely easy to install. The basis is a plate which is mounted on the wall and which is the same for all types of the WALLSCAPING series. The electrical connection is effected directly on the wall plate. A large cable inlet is fitted as standard, allowing a loop-through without an additional connection box.

The innovative Gravalock® lock - a new word created by RZB - promises quick and easy installation of the luminaire head. This is mounted without screws on the housing base. A latch prevents this from being unintentionally removed later. The well thought-out housing concept with a diaphragm valve also reliably protects the light source and the converter from environmental influences.

Power is reliably supplied by means of a plug connector between the base and the head. The luminaire is closed at the top and bottom by a frameless glass cover. This can easily be removed at any time by a bayonet connection. ZONO and NADELSPOT are available with light emission one or both sides. With all four luminaire families, it is also possible to choose between wide-beam and narrow-beam light distribution. The versions with light distribution on both sides even allow a combination of narrow-beam light emission upwards and wide-beam light emission downwards.

The starting point of all luminaire head designs within the WALLSCAPING series are the timeless basic forms of cuboid and cylinder. TECHNO and CYL use square and circular cross-sections in an elegant longitudinal orientation. ZONO and NADELSPOT form the more compact equivalent with a flush transition to the wall. In this way the right shape can be found for practically every environment – and the perfect solution for an architectural highlight.

### ADDITIONAL ADVANTAGES

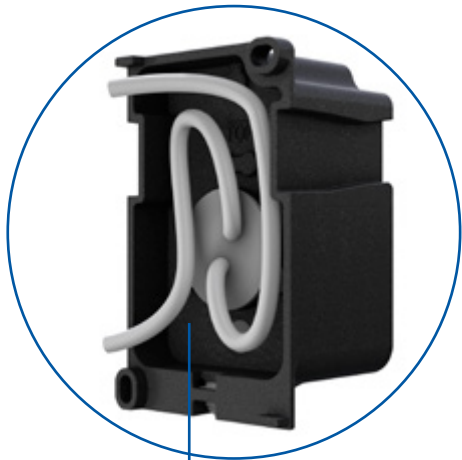
- ⊕ Made in Germany
- ⊕ Four luminaire heads - one mounting base
- ⊕ Marine grade coating
- ⊕ Quick installation:  
Fixing and electrical connection is done only at the fixing plate, the luminaire is screwlessly plugged on thereafter and held into position via RZB Gravalock® System.  
A quick-connector between base and head provides safe power supply.
- ⊕ Elegant appearance thanks to RZB Gravalock® covering the screws
- ⊕ The innovative housing concept protects light source and driver reliably against all weather conditions
- ⊕ The standard large cable inlet allows a simple loop-through without an additional connection box
- ⊕ The elegant linear shape suits excellent to modern architecture





# WALLSCAPING

## Technology



Two cable entries for loop-through  
Generous space for cable placement

**Fixing on the wall**  
outside the gasketed area,  
drill hole deviations can be compensated.

### RZB Gravolock® system

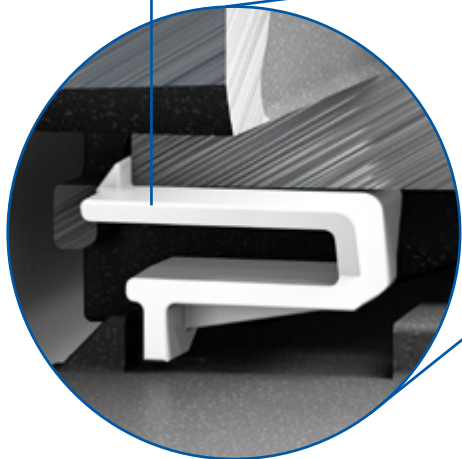
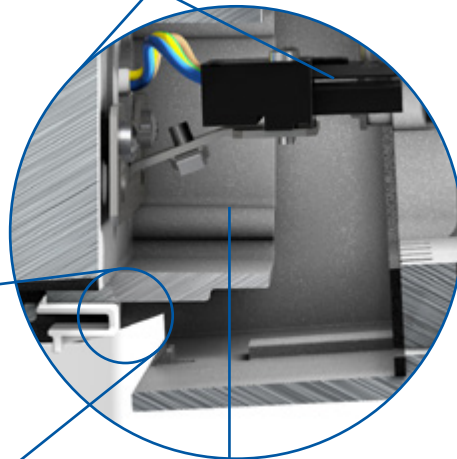
Quick and easy installation of  
the luminaire head, without  
tools on the mounting base.



With membrane valve to  
**prevent condensed water**

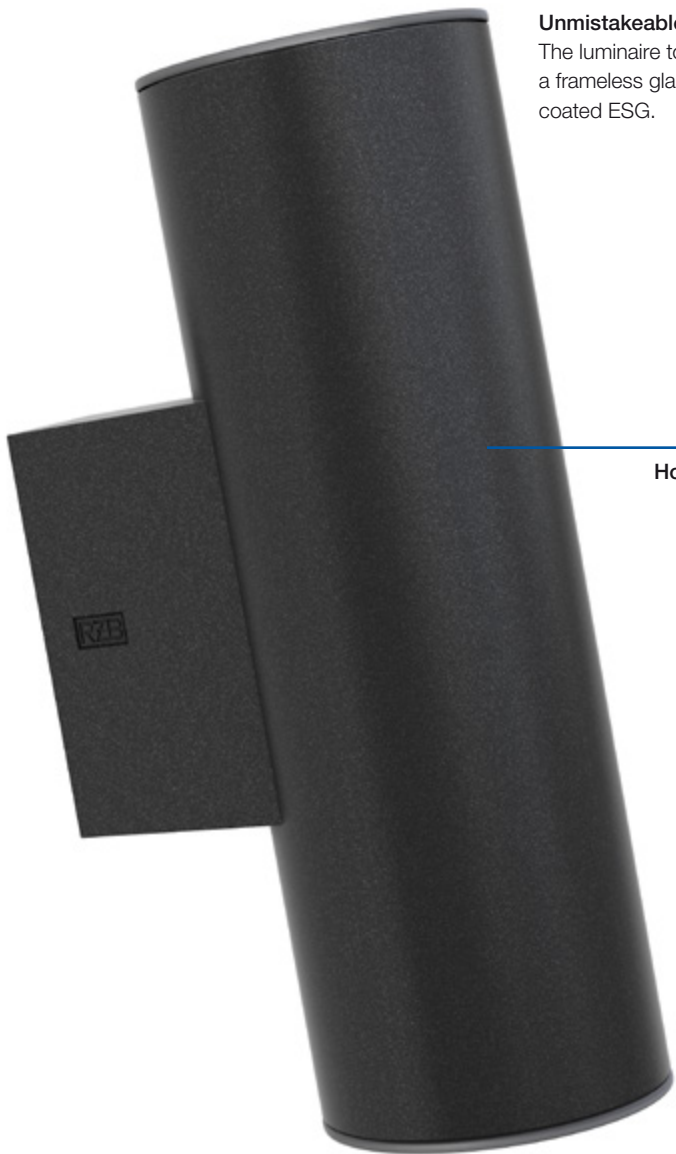
### Safety

A latch prevents this from  
being removed later.



### Comfortable installation

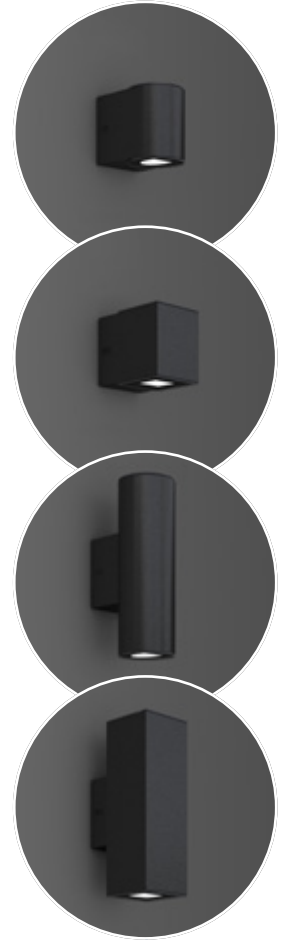
A quick-connector between  
base and head provides safe  
power supply.



### Unmistakeable features

The luminaire top and bottom consist of a frameless glass cover made of ceramic coated ESG.

**Housing** made of corrosion-resistant pressure die-cast aluminium, marine grade powder coating.



Four luminaire heads - one mounting base

## RZB GRAVOLOCK® SYSTEM

### ⊕ Innovation

The innovative Gravalock® lock system promises a quick and easy installation of the luminaire head.

### ⊕ Long service life

The use of state-of-the-art LED technology allows reduced energy consumption and a long LED service life. Corrosion-resistant, powder-coated housing made of die-cast aluminium prevents corrosion.

### ⊕ Impermeability

The innovative housing concept protects the light source safely from all effects of weather. The integrated vent valve avoids condensation in the luminaire.

### ⊕ Flexibility

A selection of different versions of the luminaire heads ensures creative freedom. Cylindrical and cubic types with several light characteristics are available for the planner. The powder coated parts can, in addition to the two standard colours silver metallic and anthracite metallic, be coated to suit specific customer requirements.

# WALLSCAPING

Everything at a glance





# WALLSCAPING

## Product overview



### Wall luminaires | Nadelspot

Type of Protection: **IP 65**  
 Protection Class: I  
 Impact Protection: IK03



Housing of corrosion-resistant pressure die-cast aluminium for outdoor use, powder-coated. Cover made of ceramic-coated toughened glass with bayonet lock. Fixing on the wall outside the gasketed volume, drill hole deviations can be compensated. Screwless luminaire fixing via RZB Gravalock® System. With membrane valve as a standard to prevent condensed water. Electrical plug and play featuring quick connector. With mains voltage LED module. Cable entry granting two cables for loop-through.

Integral LED module, please place a separate order for LEDPAR16 lamps.

Available colours (X): 31 = anthracite metallic, 4 = silver metallic

Reference number	Dimensions	Lamp	Light colour	Luminaire flux	System power	dimmi-able	EEC
------------------	------------	------	--------------	----------------	--------------	------------	-----

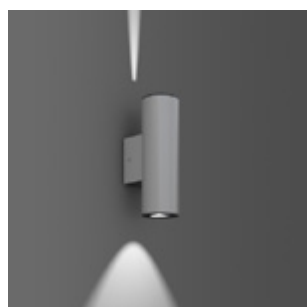
#### Wall luminaires Price Category 12

	<b>Light emission: down, Flood</b>						
582025.00X	L 100, B 154, H 127	LED <sup>(1)</sup>	830	150 lm	4 W	on/off	A+
582025.00X.1	L 100, B 154, H 127	LED <sup>(1)</sup>	840	160 lm	4 W	on/off	A+
	<b>Light emission: up and down, Flood/Flood</b>						
582027.00X	L 100, B 154, H 127	LED <sup>(1)</sup>	830	280 lm	8 W	on/off	A+
582027.00X.1	L 100, B 154, H 127	LED <sup>(1)</sup>	840	290 lm	8 W	on/off	A+
	<b>Light emission: up and down, Spot/Flood</b>						
582026.00X	L 100, B 154, H 127	LED <sup>(1)</sup>	830	190 lm	7,5 W	on/off	A+
582026.00X.1	L 100, B 154, H 127	LED <sup>(1)</sup>	840	190 lm	7,5 W	on/off	A+
	<b>Light emission: up, Flood</b>						
582035.00X	L 100, B 154, H 127	LED <sup>(1)</sup>	830	150 lm	4 W	on/off	A+
582035.00X.1	L 100, B 154, H 127	LED <sup>(1)</sup>	840	160 lm	4 W	on/off	A+
	<b>Light emission: up, Spot</b>						
582036.00X	L 100, B 154, H 127	LED <sup>(1)</sup>	830	35 lm	3,5 W	on/off	A+
582036.00X.1	L 100, B 154, H 127	LED <sup>(1)</sup>	840	35 lm	3,5 W	on/off	A+

#### Wall luminaires for LEDPAR16 lamps Price Category 12

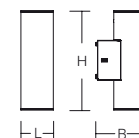
	<b>Light emission: down</b>						
582045.00X *	L 100, B 154, H 127	1 x LEDPAR16	4 W			on/off	A++
	<b>Light emission: up</b>						
582046.00X *	L 100, B 154, H 127	1 x LEDPAR16	4 W			on/off	A++

\* Beam angle depends on the LEDPAR16 lamp used



### Wall luminaires | Cyl

Type of Protection: **IP 65**  
 Protection Class: I  
 Impact Protection: IK03



Housing of corrosion-resistant pressure die-cast aluminium for outdoor use, powder-coated. Cover made of ceramic-coated toughened glass with bayonet lock. Fixing on the wall outside the gasketed volume, drill hole deviations can be compensated. Screwless luminaire fixing via RZB Gravalock® System. With membrane valve as a standard to prevent condensed water. Electrical plug and play featuring quick connector. With mains voltage LED module. Cable entry granting two cables for loop-through.

Integral LED module, please place a separate order for LEDPAR16 lamps.

Available colours (X): 31 = anthracite metallic, 4 = silver metallic

Reference number	Dimensions	Lamp	Light colour	Luminaire flux	System power	dimmi-able	EEC
------------------	------------	------	--------------	----------------	--------------	------------	-----

#### Wall luminaires Price Category 12

	<b>Light emission: up and down, Flood/Flood</b>						
582021.00X	L 100, B 154, H 307	LED <sup>(1)</sup>	830	280 lm	8 W	on/off	A+
582021.00X.1	L 100, B 154, H 307	LED <sup>(1)</sup>	840	290 lm	8 W	on/off	A+
581643.00X	L 100, B 154, H 307	LED <sup>(1)</sup>	830	720 lm	19 W	on/off	A+
581643.00X.1	L 100, B 154, H 307	LED <sup>(1)</sup>	840	760 lm	19 W	on/off	A+
	<b>Light emission: up and down, Spot/Flood</b>						
582020.00X	L 100, B 154, H 307	LED <sup>(1)</sup>	830	190 lm	7,5 W	on/off	A+
582020.00X.1	L 100, B 154, H 307	LED <sup>(1)</sup>	840	190 lm	7,5 W	on/off	A+
581644.00X	L 100, B 154, H 307	LED <sup>(1)</sup>	830	390 lm	13 W	on/off	A+
581644.00X.1	L 100, B 154, H 307	LED <sup>(1)</sup>	840	420 lm	13 W	on/off	A+

#### Wall luminaires for LEDPAR16 lamps Price Category 12

	<b>Light emission: up and down</b>						
582041.00X *	L 100, B 154, H 307	2 x LEDPAR16	4 W			on/off	A++

\* Beam angle depends on the LEDPAR16 lamp used



### Wall luminaires | Zono

Type of Protection: **IP 65**

Protection Class: I

Impact Protection: IK03

Housing of corrosion-resistant pressure die-cast aluminium for outdoor use, powder-coated. Cover made of ceramic-coated toughened glass with bayonet lock. Fixing on the wall outside the gasketed volume, drill hole deviations can be compensated. Screwless luminaire fixing via RZB Gravalock® System. With membrane valve as a standard to prevent condensed water. Electrical plug and play featuring quick connector. With mains voltage LED module. Cable entry granting two cables for loop-through.

Integral LED module, please place a separate order for LEDPAR16 lamps.

Available colours (X): 31 = anthracite metallic, 4 = silver metallic



Reference number	Dimensions	Lamp	Light colour	Luminaire flux	System power	dim-able	EEC
<b>Wall luminaires</b>							
<b>Price Category 12</b>							
<b>Light emission: down, Flood</b>							
582028.00X	L 100, B 154, H 127	LED <sup>(1)</sup>	830	140 lm	4 W	on/off	A+
582028.00X.1	L 100, B 154, H 127	LED <sup>(1)</sup>	840	150 lm	4 W	on/off	A+
<b>Light emission: up and down, Flood/Flood</b>							
582030.00X	L 100, B 154, H 127	LED <sup>(1)</sup>	830	270 lm	8 W	on/off	A+
582030.00X.1	L 100, B 154, H 127	LED <sup>(1)</sup>	840	280 lm	8 W	on/off	A+
<b>Light emission: up and down, Spot/Flood</b>							
582029.00X	L 100, B 154, H 127	LED <sup>(1)</sup>	830	180 lm	7,5 W	on/off	A+
582029.00X.1	L 100, B 154, H 127	LED <sup>(1)</sup>	840	180 lm	7,5 W	on/off	A+
<b>Light emission: up, Flood</b>							
582037.00X	L 100, B 154, H 127	LED <sup>(1)</sup>	830	140 lm	4 W	on/off	A+
582037.00X.1	L 100, B 154, H 127	LED <sup>(1)</sup>	840	150 lm	4 W	on/off	A+
<b>Light emission: up, Spot</b>							
582038.00X	L 100, B 154, H 127	LED <sup>(1)</sup>	830	35 lm	3,5 W	on/off	A+
582038.00X.1	L 100, B 154, H 127	LED <sup>(1)</sup>	840	35 lm	3,5 W	on/off	A+

Reference number	Dimensions	Lamp	Light colour	Luminaire flux	System power	dim-able	EEC
<b>Wall luminaires for LEDPAR16 lamps</b>							
<b>Price Category 12</b>							
<b>Light emission: down</b>							
582048.00X *	L 100, B 154, H 127	1 x LEDPAR16	4 W			on/off	A++
<b>Light emission: up</b>							
582049.00X *	L 100, B 154, H 127	1 x LEDPAR16	4 W			on/off	A++

\* Beam angle depends on the LEDPAR16 lamp used

### Wall luminaires | Techno

Type of Protection: **IP 65**

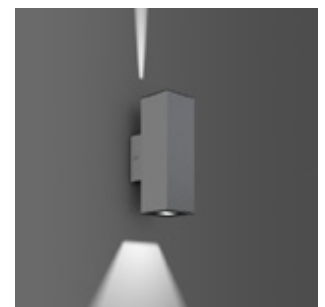
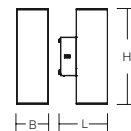
Protection Class: I

Impact Protection: IK03

Housing of corrosion-resistant pressure die-cast aluminium for outdoor use, powder-coated. Cover made of ceramic-coated toughened glass with bayonet lock. Fixing on the wall outside the gasketed volume, drill hole deviations can be compensated. Screwless luminaire fixing via RZB Gravalock® System. With membrane valve as a standard to prevent condensed water. Electrical plug and play featuring quick connector. With mains voltage LED module. Cable entry granting two cables for loop-through.

Integral LED module, please place a separate order for LEDPAR16 lamps.

Available colours (X): 31 = anthracite metallic, 4 = silver metallic



Reference number	Dimensions	Lamp	Light colour	Luminaire flux	System power	dim-able	EEC
<b>Wall luminaires</b>							
<b>Price Category 12</b>							
<b>Light emission: up and down, Flood/Flood</b>							
582024.00X	L 100, B 154, H 307	LED <sup>(1)</sup>	830	270 lm	8 W	on/off	A+
582024.00X.1	L 100, B 154, H 307	LED <sup>(1)</sup>	840	280 lm	8 W	on/off	A+
581645.00X	L 100, B 154, H 307	LED <sup>(1)</sup>	830	700 lm	19 W	on/off	A+
581645.00X.1	L 100, B 154, H 307	LED <sup>(1)</sup>	840	740 lm	19 W	on/off	A+
<b>Light emission: up and down, Spot/Flood</b>							
582023.00X	L 100, B 154, H 307	LED <sup>(1)</sup>	830	180 lm	7,5 W	on/off	A+
582023.00X.1	L 100, B 154, H 307	LED <sup>(1)</sup>	840	180 lm	7,5 W	on/off	A+
581646.00X	L 100, B 154, H 307	LED <sup>(1)</sup>	830	390 lm	13 W	on/off	A+
581646.00X.1	L 100, B 154, H 307	LED <sup>(1)</sup>	840	410 lm	13 W	on/off	A+

Reference number	Dimensions	Lamp	Light colour	Luminaire flux	System power	dim-able	EEC
<b>Wall luminaires for LEDPAR16 lamps</b>							
<b>Price Category 12</b>							
<b>Light emission: up and down</b>							
582044.00X *	L 100, B 154, H 307	2 x LEDPAR16	4 W			on/off	A++

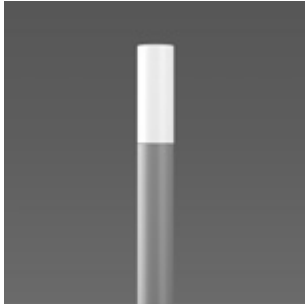
\* Beam angle depends on the LEDPAR16 lamp used

Specifications subject to alteration

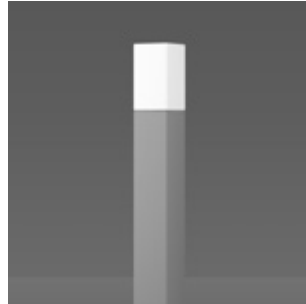
LED<sup>(1)</sup> = With mains voltage LED



## FURTHER LUMINAIRES, MATCHING THIS SERIES:



⊕ Mega Tube



⊕ Mega Square



⊕ Terra Edelstahl



⊕ Terra Edelstahl

## HIGHEST PRODUCT AND CONSULTING QUALITY

### ⊕ RELIABILITY

We are your reliable partner. From the first idea to the implementation and far beyond, we accompany your project. Personally, passionately and individually. Thanks to our excellent expertise, top product quality and services such as lighting design, economic efficiency analysis and commissioning, we meet the high demands of all parties involved in the planning process.

- ✓ availability of BIM files
- ✓ easy and quick installation
- ✓ quality and long warranty

### ⊕ WARRANTY

RZB grants 5 years warranty on LED luminaires and 2 years warranty on emergency luminaires!

The creation of high quality lighting solutions is our passion. Our products are developed and manufactured with the utmost care.

In addition to SMART TECHNOLOGY and EXCELLENT DESIGN, we are dedicated to manufacture luminaires of highest quality throughout the entire value chain through to After Sales Service.

Because of this, we confidently grant you a 5 years warranty on LED luminaires and 2 years warranty on emergency luminaires with effect of the date of invoice without prior registration of your project.

Warranty terms to be found under

[rzb.de/en/service/led-luminaire-warranty](https://www.rzb.de/en/service/led-luminaire-warranty)

RZB - FOR A TANGIBLE ADDED VALUE.



06.2019



**RZB**  
**Rudolf Zimmermann,**  
**Bamberg GmbH**

Rheinstr. 16  
96052 Bamberg  
Germany

Phone +49 951/79 09-374  
Fax +49 951/79 09-212

[www.rzb-lighting.com](http://www.rzb-lighting.com)  
[export@rzb.eu](mailto:export@rzb.eu)



Member of **licht.de**